



LoRaWAN Ultrasonic Distance/Level Sensor

The sensor is compatible with LoRaWAN and has ultra-long range and ultra-long battery life. The sensor measures the target distance accurately by detecting ultra-sonic pulses that reflect from liquid and solid targets.

Willow Ultrasonic Distance/Level Sensor uses the LoRaWAN communication protocol to remotely monitor the situation in locations where the water, snow etc. level is variable and dangerous, such as manholes, canals, and tanks. The Ultrasonic LoRaWAN sensor measure the distance accurately up to 7.5 meters effectively.

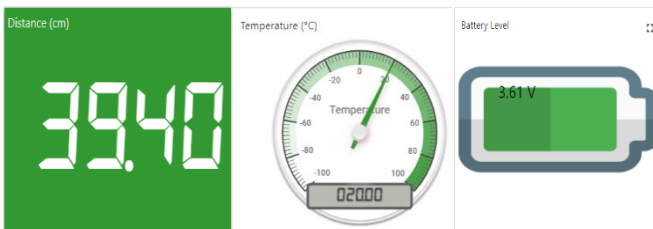


Application examples:

- Manhole flooding monitor
- Water Tank Level
- Snow Level
- Wastewater Level
- Cereal Storage
- Industrial Liquid Level

Specifications

- 868/915 MHz LoRaWAN protocol
- Up to 15 km communications distance
- Up to 10 years of battery life
- Low power consumption; sleep current 1.5uA
- Programmable periodic status report
- Customizable instant status notification
- IP67 Outdoor durability
- Special galvanized sensor holder



The sensor reports 3 parameters:

1. Distance of the target such as liquid, snow
2. Temperature of the sensor
3. Battery level

All data can be visualizes easily on the cloud.